

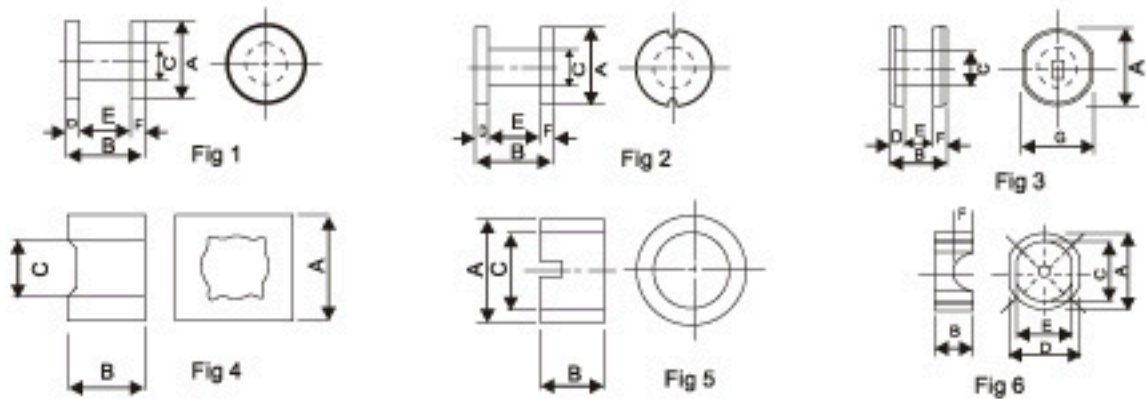


Coil Core Series SMD DR & SLEEVE Type

1. Applications:
SMT POWER INDUCTOR
SMD POWER CHOKE

2. Materials:
GL3B, GLGB, GL5B.

3. Shape:



4. Dimensions (m/m)

ITEM	Dimensions in mm							Fig
	A	B	C	D	E	F	G	
DR 5.4x2.6M	5.40±0.10	2.60±0.10	2.30±0.15	0.60	1.40±0.10	0.60		2
RI 6.8x2.3x5.8	6.80±0.10	2.30±0.10	5.80±0.15					5
DR 5.4x4.0M	5.40±0.10	4.00±0.10	2.85±0.10	0.75	2.50±0.10	0.75		2
RI 6.8x3.7x5.8	6.80±0.10	3.70±0.15	5.80±0.15					5
DR 5.8x4.0	5.80±0.15	4.00±0.15	3.00±0.15	0.80	2.40±0.10	0.80	5.20±0.15	3
RI 7.8x4.1x6.2	7.80±0.15	4.10±0.15	6.20±0.15	7.00±0.15	5.50±0.10	2.20		6
DR 5.8x4.6	5.80±0.15	4.60±0.15	3.00±0.15	0.95	2.60±0.10	0.95	5.20±0.15	3
RI 7.8x4.7x6.2	7.80±0.15	4.7±0.15	6.20±0.15	7.00±0.15	5.50±0.10	2.20		6
DR 7.8x4.0	7.80±0.15	4.00±0.15	3.70±0.15	0.80	2.40±0.10	0.80	7.00±0.15	3
RI 10x4.1x8.4	10.0±0.25	4.10±0.15	8.40±0.15	9.00±0.15	7.50±0.10	2.20		6
DR 7.8x4.6	7.80±0.15	4.60±0.15	3.70±0.15	0.95	2.60±0.10	0.95	7.00±0.15	3
RI 10x4.7x8.4	10.0±0.25	4.70±0.15	8.40±0.15	9.00±0.15	7.50±0.10	2.20		6
DR 10.0x4.0	10.0±0.15	4.00±0.15	5.00±0.15	0.80	2.40±0.10	0.80	9.00±0.15	3
RI 12.6x4.1x10.7	12.6±0.25	4.10±0.15	10.7±0.15	11.6±0.15	9.70±0.10	2.20		6
DR 10.0x4.6	10±0.15	4.60±0.15	5.00±0.15	0.95	2.60±0.10	0.95	9.00±0.15	3
RI 12.6x4.7x10.7	12.6±0.25	4.70±0.15	10.70±0.15	11.6±0.15	9.70±0.10	2.20		6
DR 5.3x2.8	5.30±0.10	2.80±0.10	2.60±0.15	0.65	1.50±0.10	0.65		1
RI 7.3x2.7x5.7	7.30±0.15	2.70±0.10	5.70±0.15					4
DR 5.3x3.6	5.30±0.25	3.60±0.10	2.80±0.15	0.60	2.40±0.10	0.60		1
RI 7.3x3.5x5.7	7.30±0.25	3.50±0.10	5.70±0.15					4